

Tested by: SM
Inspected by: RS

Date: February 21th, 2023

Summary of Test Data

Parameter*	Value	Unit
Operating Current	640	mA
Center Wavelength	1550.08	nm
Output Power	106	mW
Linewidth	96	Hz
Side Mode Suppression Ratio (SMSR) at Operating Current	71	dB

* Measurement conditions: Laser chip temperature at 25°C and FBG temperature at 26°C.

Output fiber: PM1550 with FC/APC connector. Laser shipped with default operating current at 640mA.

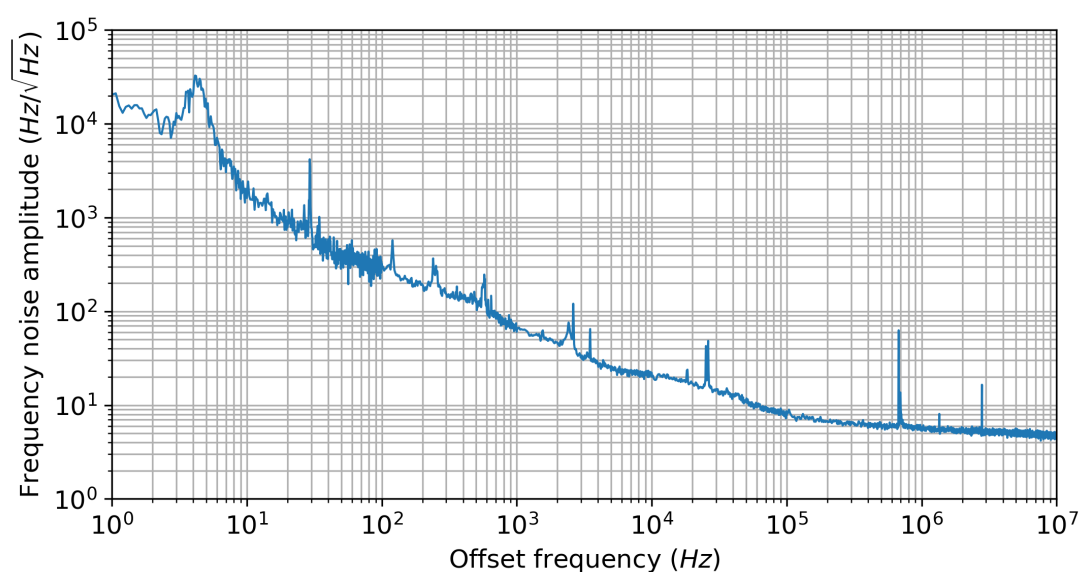


Figure 1 Laser output frequency noise at 640mA pump current. Measured with OE wave 4000 noise analyzer.

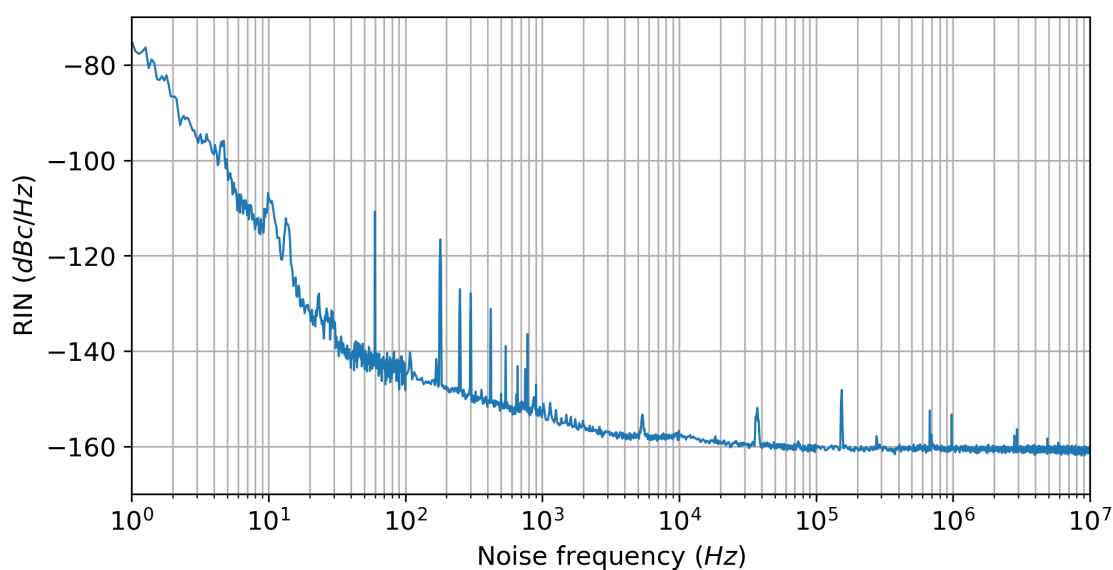


Figure 2 Laser relative intensity noise at 640mA pump current. Measured with OE wave 4000 noise analyzer.

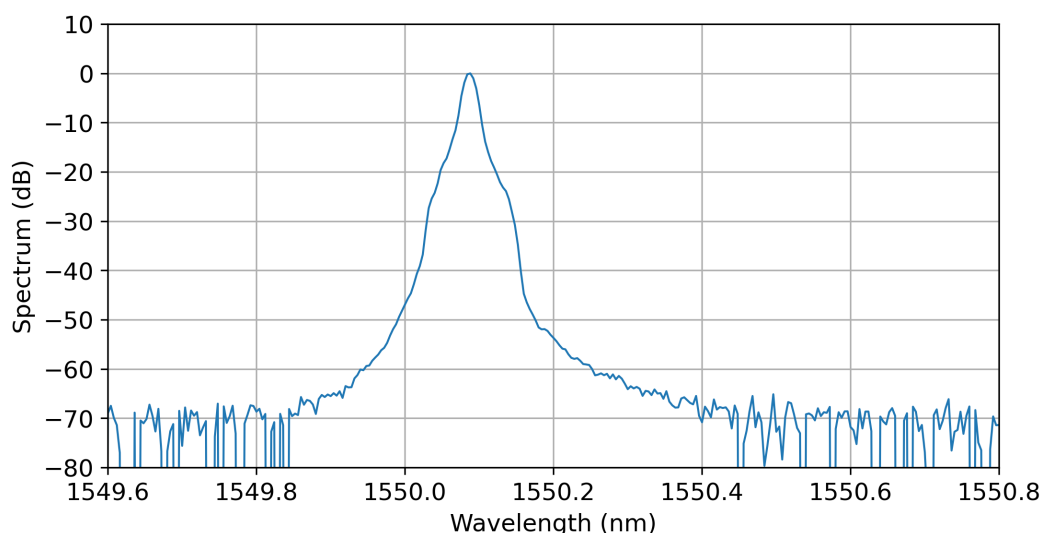


Figure 3 Laser output spectrum at 640mA pump current, measured with Yokogawa AQ6370D OSA, limited by OSA resolution bandwidth 0.02nm.

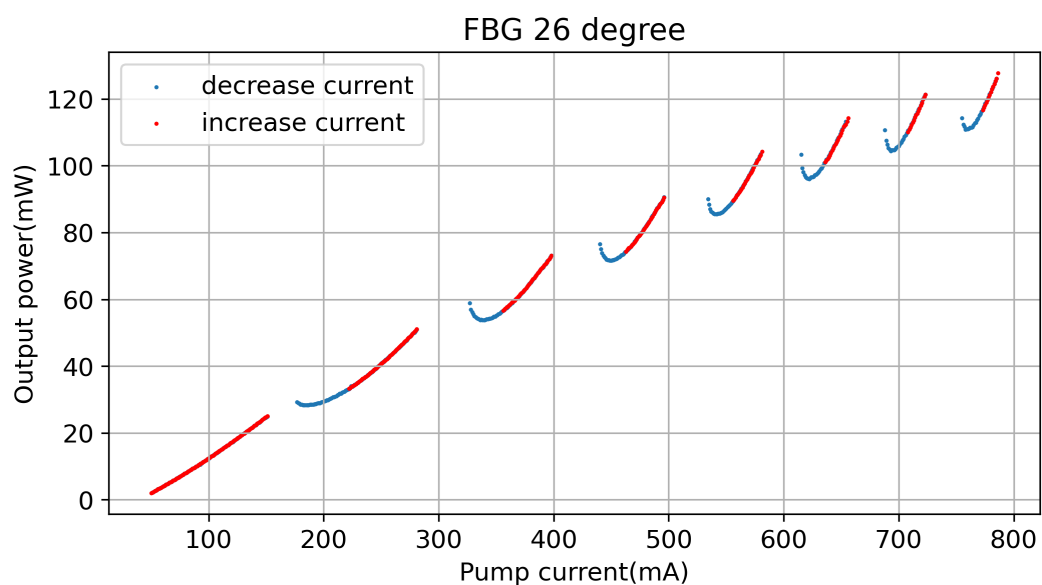


Figure 4 Output power for single-mode only regions, FBG temperate at 26°C.

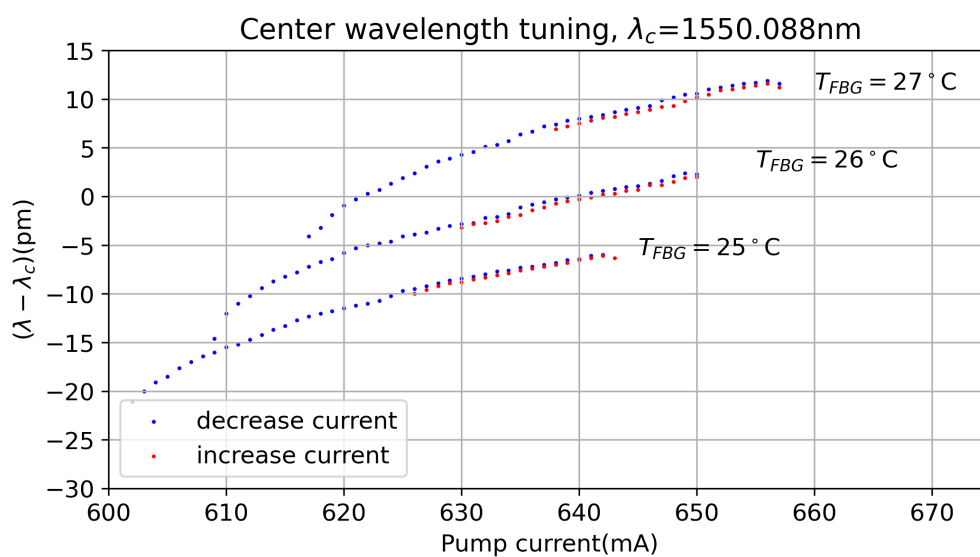


Figure 5 Center wavelength turning with pump current and FBG temperature, device is factory set to 640 mA, 26°C FBG temperature.